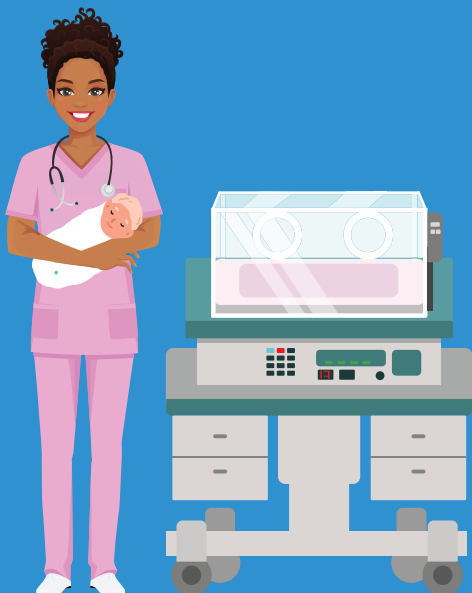


# INDUSTRY SAVES LIVES!



## Medical Devices

**OxyChem** and **Eastman** produce ethanol, chlorine gas, chlorine trifluoride, and tritan polymer, which are all found in medical devices. These devices wouldn't work without electrical power provided by **EthosEnergy**!



## Prosthetics

**Sasol** produces the alumina found in artificial, ceramic joint replacements.



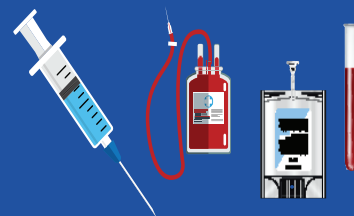
## Scrubs

**Shell Geismar** produces mono-ethylene glycol (MEG) and **Koch Methanol St. James** makes the methanol found in the synthetic fibers that **BASF** produces to make scrubs worn by nurses and doctors.



## Disinfectants

**OxyChem** and **Shell Geismar** produce sodium hypochlorite and ethyl alcohol, which are used in many cleaning products. **Dow Chemical** makes Formula 409 and **ExxonMobil**'s North Baton Rouge facility is the nation's number one supplier of isopropyl alcohol.



## Medical Supplies

**Formosa**, **Shintech Louisiana**, **Westlake**, and **Shell Geismar** produce polyvinyl chloride (PVC) and co-monomers that are used to make the plastic found in medical supplies intended for one-time use.



## Medicines

**Eastman** produces amines that are found in popular diabetes medications and cellulose esters that provide extended-release in medications. **Koura** produces medical propellants that are used in 75% of the world's metered dose inhalers. Ibuprofen is produced in Louisiana by **Albemarle**. **Phillips 66** produces the sulfur that is found in many ointments and other medications.



## Personal Protective Equipment

**Methanex** produces the methanol that is used to make masks and gloves. Performance polyethylene (PE) resins, produced by **ExxonMobil** and **Westlake**, and acrylonitrile, produced by **Cornerstone Chemical Company**, are also found in PPE.